



CATALOG

Prefabricated Electrical Solutions

Engineered assemblies built to streamline installation, reduce labor, and improve jobsite consistency.

FSG Prefabrication

Built Smarter. Installed Faster.



Construction schedules are tighter than ever, and jobsites are unpredictable. FSG Prefabrication provides you with control, consistency, and speed by relocating complex electrical assemblies to a clean, safe, and well-equipped off-site environment.

How It Works



Collaborate Early

We review your project to identify prefabrication opportunities.



Build Off-Site

Our team fabricates assemblies in a controlled, efficient environment.



Deliver and Install

Products arrive labeled, organized, and ready for installation.

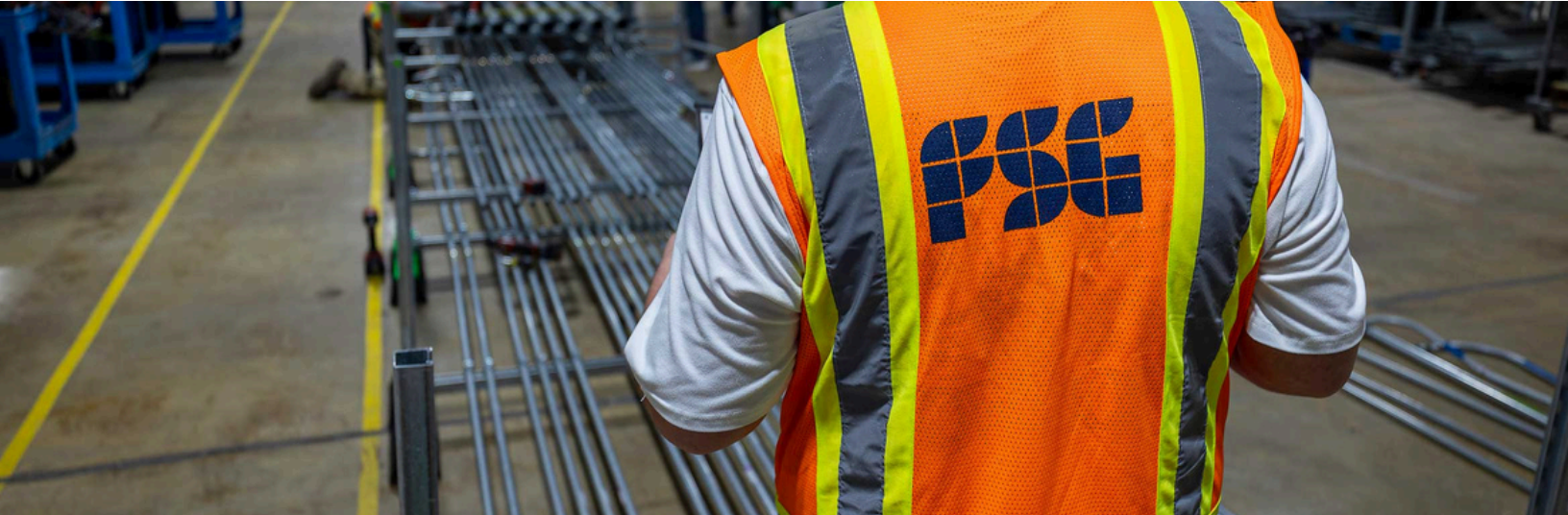
Your Partner in Productivity, Safety, and Quality

FSG Prefabrication delivers measurable improvements in efficiency, quality, and cost. We help you build better, faster, and safer — every time.

- **Improved Install Quality**
Every assembly is built by licensed electricians and verified through our QA/QC program.
- **Accelerated Schedules**
Streamlined workflows and just-in-time delivery keep your project moving.
- **Lean Manufacturing**
We reduce waste, improve material use, and enhance sustainability.
- **Safer Job Sites**
Less time in the field means fewer hazards and cleaner, more efficient workspaces.
- **Hands-On Master Electrician Training**
Every team member is trained for precision and consistency.
- **Tool and Equipment Accessibility**
Our controlled environment ensures every job is done right the first time.

Catalog Index

- TEMP POWER SOLUTIONS 3
- UNDERGROUND COMPONENTS 5
- DECK & CMU WALL COMPONENTS 9
- OVERHEAD COMPONENTS 13
- CONDUIT 17
- IN-WALL ROUGH-IN 22
- ELECTRICAL ROOM ASSEMBLIES 26
- FIXTURE ASSEMBLIES 29
- DEVICES & TRIM 32
- ROOFTOP ASSEMBLIES 34
- DATA & LOW VOLTAGE 37
- LEAN & 5S 39



Project-Specific Prefabrication, Built to Your Requirements

FSG Prefab's Custom Solutions provide project-specific prefabricated assemblies designed to support unique layouts, site conditions, and installation challenges. When standard assemblies do not meet project requirements, FSG works from provided drawings, specifications, or coordination models to deliver job-ready solutions that improve efficiency and reduce onsite labor.

Custom solutions can be applied across all phases of construction, including underground, deck and CMU walls, overhead, in-wall rough-in, electrical rooms, rooftop installations, data and low voltage systems, and lean jobsite support.

Key Benefits

- Reduces onsite labor and congestion
- Improves installation accuracy
- Supports complex or non-standard layouts
- Enhances schedule reliability
- Scales to projects of any size

What Can Be Customized

- Conduit routing and bend geometry
- Rack, hanger, and support assemblies
- Box layouts and device configurations
- Electrical room coordination
- Low-voltage and data infrastructure
- Lean storage, carts, and workflow tools

Applications

- Complex commercial projects
- Congested or high-coordination areas
- Non-standard installations
- Schedule-driven builds
- Specialized infrastructure needs

How It Works

- Built from coordinated drawings
- Fabricated in a controlled shop environment
- Delivered job-ready to the field
- Reduces onsite fabrication and rework
- Supports project schedules



TEMP POWER SOLUTIONS

TEMP POWER SOLUTIONS

FSG-TP01

Spider Box Assemblies

FSG Spider Box Assemblies deliver flexible, multi-circuit temporary power exactly where crews need it. Designed for fast deployment and repeated relocation, these assemblies support high-traffic construction zones while reducing setup time and improving jobsite safety.



Features

- Portable, jobsite-ready power
- Multiple receptacle options
- Built for demanding environments
- Clearly labeled circuits
- Easy to deploy and relocate

Applications

- General construction power
- Interior build-outs
- High-traffic work zones
- Temporary power for tools and equipment

FSG-TP02

Temp Power Carts

FSG Temp Power Carts provide centralized, high-capacity temporary power for large-scale and long-duration projects. Built on heavy-duty rolling frames, these carts support efficient power distribution while minimizing field assembly and downtime.



Features

- Heavy-duty rolling frame
- High-load temporary distribution
- Organized, service-friendly layout
- Lockable components available
- Easy to relocate onsite
- Built for extended use

Applications

- Core and shell projects
- Industrial facilities
- Long-term temporary power
- Centralized distribution points

ON MAY NOT CONTAIN ALL DETAILS REQUIRED FOR CONSTRUCTION. INVESTIGATION MAY BE REQUIRED TO ENSURE SUITABILITY OF THESE SPECIFIC APPLICATIONS. IT IS THE USER'S RESPONSIBILITY TO VERIFY THE SPECIFICATION OF THE EQUIPMENT/SYSTEM IS IN ACCORDANCE WITH ALL APPLICABLE CODES AND STANDARDS.

FINISHED GRADE

MINIMUM (30")

EBR PVC (TYPICAL)

AND INTERMEDIATE SPACERS 1,219mm (48") ON CENTER

SONRY LEVELING BLOCKS BASE SPACERS AS NEEDED

H TEST, IN ACCORD WITH ASTM E BOTTOM OF EXCAVATION TO 85% TO 95% OF MAXIMUM DRY PRIOR TO CONCRETE PLACEMENT.



10-WAY DUCTBANK DETAIL
NO SCALE

UNDERGROUND COMPONENTS

1. DUCT BANK SPACERS
2. UNDERGROUND RACK ASSEMBLY
3. NIPPLES
4. STAKES
5. CANDY CANES
6. FLOOR BOXES

75mm (3") MINIMUM SEPARATION (TYPICAL)

34mm (1-1/2") MINIMUM SEPARATION (TYPICAL)

75mm (3") MINIMUM SEPARATION (TYPICAL)

75mm (3") MINIMUM SEPARATION (TYPICAL)

#4 REBAR (TYPICAL) 457mm (18") ON CENTER

#4 REBAR (TYPICAL)

EQUAL

EQUAL

DUCTBANK MARKING TAPE TYPICAL

UNDERGROUND COMPONENTS

FSG-UG01

Duct Bank Spacers

Duct bank spacers provide structured conduit alignment for underground raceway installations. Manufactured for strength and uniformity, spacers simplify setup and maintain precise spacing throughout the duct bank.



Features

- Ensures proper conduit spacing
- Built for underground environments
- Supports SCH 40 PVC and more
- Reduces layout time and errors
- Multiple size configurations

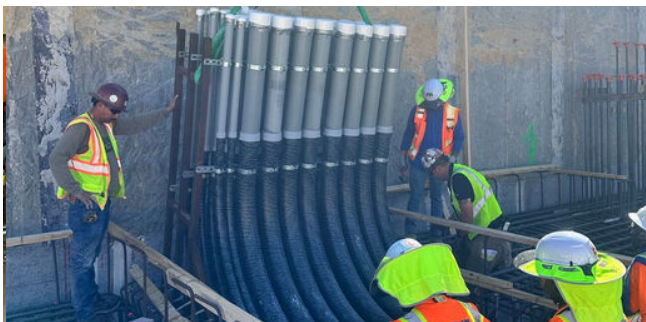
Applications

- Utility infrastructure
- Large electrical mains
- Campus distribution systems

FSG-UG02

Underground Rack Assembly

Preassembled conduit rack systems are designed for trenches, vaults, and utility corridors. These assemblies reduce field layout time by delivering consistent spacing, alignment, and conduit grouping.



Features

- Ensures proper conduit spacing
- Built for underground environments
- Supports SCH 40 PVC and more
- Reduces layout time and errors
- Multiple size configurations

Applications

- Utility corridors
- Underground vaults
- Large conduit banks

UNDERGROUND COMPONENTS

FSG-UG05

Threaded Nipples

Threaded Nipples are precision-cut conduit sections used for equipment connections, vault installations, and raceway transitions. Fabricated to specified lengths, these components reduce field cutting and threading while ensuring clean, reliable connections.



Features

- Precision-cut and threaded
- Clean end-to-end fit
- Custom lengths available
- Supports standard conduit types
- Reduces field fabrication

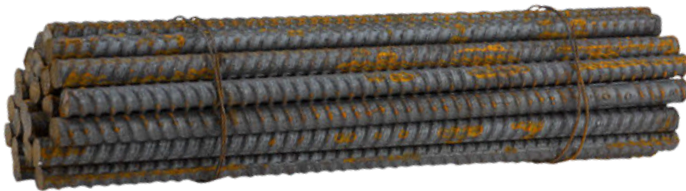
Applications

- Gear connections
- Vault installations
- Conduit transitions

FSG-UG06

Rebar Stakes

Rebar Stakes are pre-cut steel anchors used to secure conduit layouts, forms, and underground assemblies prior to encasement. Designed for durability and ease of use, they help maintain layout stability during installation.



Features

- Pre-cut #4 rebar
- Jobsite-ready anchoring
- Supports layout stability
- Durable steel material
- Easy field placement

Applications

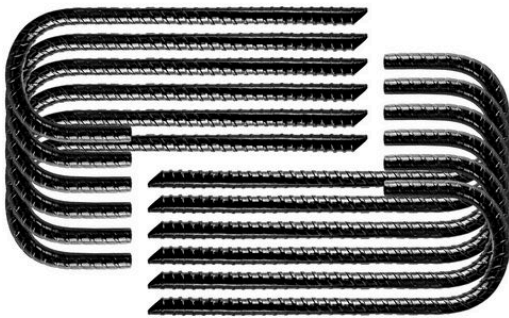
- Duct bank layout
- Underground form support
- Conduit stabilization

UNDERGROUND COMPONENTS

FSG-UG07

Rebar Candy Canes

Rebar Candy Canes are uniformly bent steel anchors designed to secure conduit, sleeves, and underground components. Their consistent hook shape provides reliable anchoring while eliminating the need for custom field bending.



Features

- Uniform hook-style bends
- Consistent anchoring support
- Durable steel material
- Reduces custom field bending
- Jobsite-ready

Applications

- Conduit anchoring
- Sleeve stabilization
- Underground layouts

FSG-UG08

Underground Floor Boxes

Underground Floor Box Assemblies provide reliable access points for power and low-voltage systems in slab installations. These assemblies are configured to project requirements and support multiple manufacturers and conduit entry options.



Features

- Underground-rated assemblies
- Multiple manufacturer options
- Flexible conduit entry points
- Durable enclosure design
- Job-specific configurations

Applications

- Slab installations
- Power and low-voltage access
- Finished floor systems



DECK & CMU WALL COMPONENTS

FRONT VIEW

RIGHT VIEW

1. FLOOR BOX
2. POKE THRU FLOOR BOX
3. CAST IN PLACE BOXES
4. CMU BOXES
5. DECK SLEEVES

SECTION A-A
SCALE 1 : 1.5

DECK & CMU WALL COMPONENTS

FSG-DW01

Floor Box Assemblies

Floor Box assemblies provide reliable access points for power and low-voltage systems in concrete deck and slab installations. Assemblies are configured to project requirements to ensure proper placement, coordination, and clean finished-floor integration.



Features

- Deck and slab compatible
- Supports power and low-voltage
- Accurate placement and coordination
- Multi-manufacturer compatible
- Job-ready prefab assemblies

Applications

- Concrete deck installations
- Finished floor systems
- Office and commercial spaces

FSG-DW02

Poke-Thru Assemblies

Poke-Thru Assemblies provide prefabricated conduit and box configurations designed to support through-slab power and data routing. These assemblies reduce field coordination while ensuring accurate alignment and code-compliant installation.



Features

- Preassembled poke-thru components
- Accurate slab penetration layout
- Supports power and data pathways
- Reduces onsite coordination
- Clean, repeatable installation

Applications

- Multi-floor buildings
- Office and commercial interiors
- Power and data distribution

DECK & CMU WALL COMPONENTS

FSG-DW03

Cast-In-Place Box Assemblies

Cast-In-Place Box Assemblies are designed for concrete pours requiring embedded electrical boxes. Prefabrication ensures proper positioning and stability during placement, reducing rework and layout errors after the pour.



Features

- Designed for concrete pours
- Secure box positioning
- Reduces layout errors
- Supports standard box types
- Job-specific configurations

Applications

- Concrete decks
- Structural slabs
- Embedded electrical rough-in

FSG-DW04

CMU Wall Box Assemblies

CMU Wall Box Assemblies provide prefabricated solutions for masonry wall installations. Assemblies are built to maintain box alignment and depth while reducing field labor during block installation.



Features

- Designed for CMU wall systems
- Maintains box alignment and depth
- Reduces field adjustments
- Supports standard electrical boxes
- Built for masonry environments

Applications

- CMU wall construction
- Utility and service rooms
- Commercial facilities

DECK & CMU WALL COMPONENTS

FSG-DW05

Deck Sleeves

Deck Sleeves are prefabricated conduit sleeve assemblies designed to maintain clear, consistent pathways through concrete decks. These sleeves simplify coordination and reduce field drilling or coring.



Features

- Prefabricated sleeve assemblies
- Maintains clear deck penetrations
- Reduces coring and drilling
- Supports multiple conduit sizes
- Clean, organized routing

Applications

- Concrete deck penetrations
- Vertical conduit routing
- Multi-story structures



OVERHEAD COMPONENTS

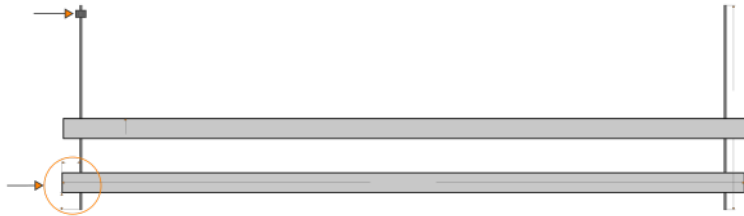
1. SINGLE STRUT RACKS
2. BACK-TO-BACK STRUT RACKS
3. 2-TIER STRUT RACKS
4. 2-TIER BACK-TO-BACK STRUT RACKS
5. WALL MOUNT STRUT RACK
6. BEAM MOUNT STRUT RACK
7. MINERALLAC CONDUIT HANGER
8. SWIVEL FIXTURE PENDANT
9. HOMERUN BOX
10. VAV/FA DISCONNECT

OVERHEAD COMPONENTS

FSG-OH01

Strut Rack Assemblies

Strut Rack Assemblies are prefabricated overhead support systems designed to organize and support conduit, cable, and raceways. Built to coordinated layouts, these assemblies reduce overhead installation time and improve consistency.



Features

- Consistent conduit spacing
- Reduces overhead installation time
- Built to coordinated drawings
- Job-ready for installation

Available Options

- Single strut rack
- Back-to-back strut rack
- Two-tier strut rack
- Two-tier back-to-back strut rack
- Custom rack configurations

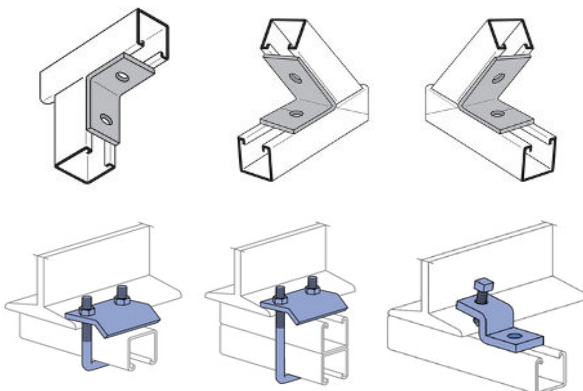
Applications

- Overhead conduit runs
- Electrical and mechanical rooms
- Commercial and industrial spaces

FSG-OH02

Wall & Beam Rack Assemblies

Wall & Beam Rack Assemblies provide prefabricated support solutions for mounting conduit and raceways to structural walls or beams. These assemblies ensure consistent spacing and secure attachment while minimizing field fabrication.



Features

- Consistent spacing and alignment
- Reduces field fabrication
- Supports multiple conduit types
- Built for overhead conditions

Available Options

- Wall-mounted rack assemblies
- Beam-mounted rack assemblies
- Mixed wall/beam configurations
- Project-specific mounting layouts

Applications

- Structural walls
- Steel beam installations
- Equipment and service areas

OVERHEAD COMPONENTS

FSG-OH03

Conduit Hanger Assemblies

Conduit Hanger Assemblies are prefabricated support components designed to suspend conduit runs from overhead structures. Assemblies are built to project requirements to improve installation speed and consistency.



Features

- Consistent conduit elevation
- Reduces repetitive overhead labor
- Supports standard hanger types
- Job-ready components

Available Options

- Minerallac-style hangers
- Single conduit hangers
- Multi-conduit hanger assemblies
- Custom hanger configurations

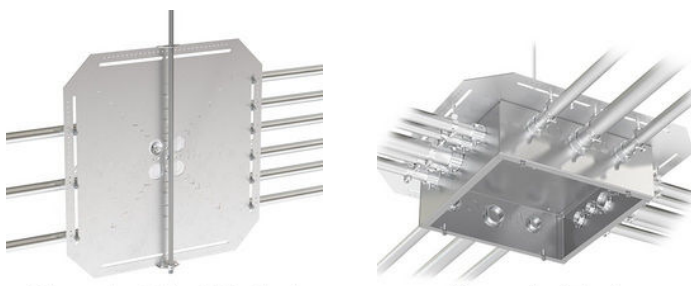
Applications

- Corridor conduit runs
- Open ceiling installations
- Commercial interiors

FSG-OH04

Homerun Box Assemblies

Homerun Box Assemblies provide prefabricated junction box solutions for consolidating homerun conduits above ceilings or in overhead spaces. These assemblies improve organization and simplify large conduit groupings.



Features

- Organized homerun routing
- Reduces field coordination
- Supports high conduit counts
- Built to layout drawings

Available Options

- Single-side homerun boxes
- Multi-side homerun boxes
- Large-format junction boxes
- Custom box layouts

Applications

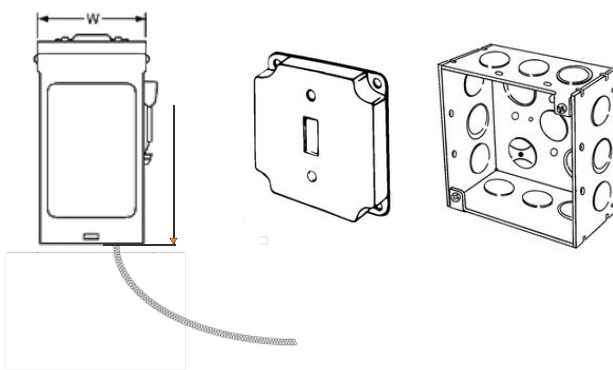
- Overhead distribution systems
- Commercial buildings
- Large electrical systems

OVERHEAD COMPONENTS

FSG-OH05

VAV & Fire Alarm Disconnect Assemblies

FSG VAV and Fire Alarm Disconnect Assemblies are prefabricated solutions designed to support overhead mechanical and life-safety equipment connections. Assemblies are built to coordinated layouts for efficient installation.



Features

- Organized conduit routing
- Reduces coordination issues
- Built to project standards
- Job-ready installation

Available Options

- VAV disconnect assemblies
- Fire alarm disconnect assemblies
- Combined disconnect configurations
- Project-specific layouts

Applications

- VAV boxes
- Fire alarm equipment
- Mechanical ceiling spaces

FSG-OH06

Swivel Fixture Pendant Assemblies

FSG Swivel Fixture Pendant Assemblies provide prefabricated support and connection solutions for suspended lighting fixtures. Assemblies allow controlled alignment while reducing repetitive overhead work.



Features

- Maintains fixture alignment
- Reduces fixture install time
- Supports suspended fixtures
- Clean, consistent results

Available Options

- Swivel pendant assemblies
- Fixed pendant assemblies
- Single or multi-fixture drops
- Custom pendant configurations

Applications

- Pendant lighting systems
- Open ceilings
- Commercial interiors

Notches

Star Poi



CONDUIT

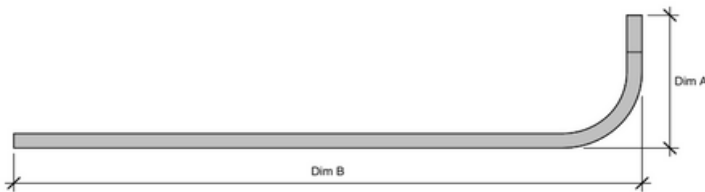
1. 90-DEGREE BENDS
2. OFFSETS
3. LEFT OR RIGHT KICK 90
4. BACK-TO-BACK 90
5. 3-BEND SADDLE
6. 4-BEND SADDLE
7. NIPPLES

CONDUIT

FSG-CN01

90-Degree Bends

90-Degree Bends are factory-bent conduit sections produced to standard radii for consistent routing and fit. Prefabrication reduces field bending and improves overall installation accuracy.



Features

- Factory-bent conduit
- Standard bend radius
- Consistent geometry
- Reduces field labor
- Clean, repeatable fit

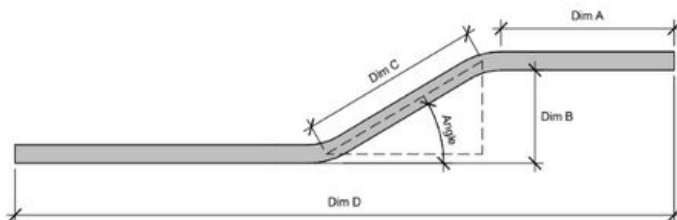
Applications

- Raceway routing
- Vertical transitions
- Equipment connections

FSG-CN02

Offsets

Offset Bends are prefabricated to accommodate obstructions and elevation changes while maintaining proper conduit alignment.



Features

- Accurate offset geometry
- Consistent elevation control
- Reduces onsite adjustments
- Prefabricated for efficiency
- Built to project layouts

Applications

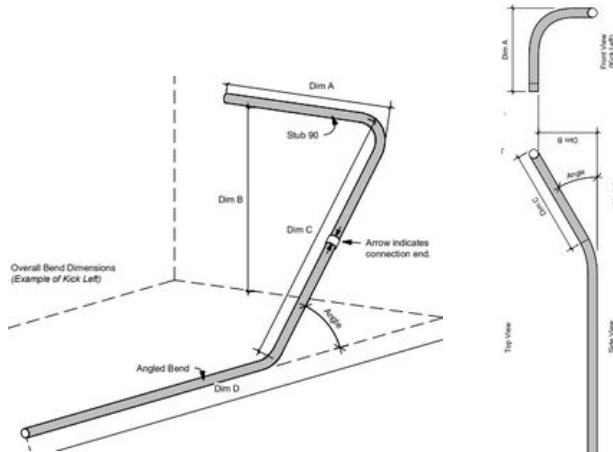
- Obstruction clearance
- Wall and slab routing
- Tight-space installations

CONDUIT

FSG-CN03

Kick 90s (Left or Right)

Kick 90s provide controlled directional changes for conduit routing around structural or mechanical conflicts.



Features

- Directional conduit control
- Factory-controlled bends
- Improves routing accuracy
- Reduces rework
- Built to layout requirements

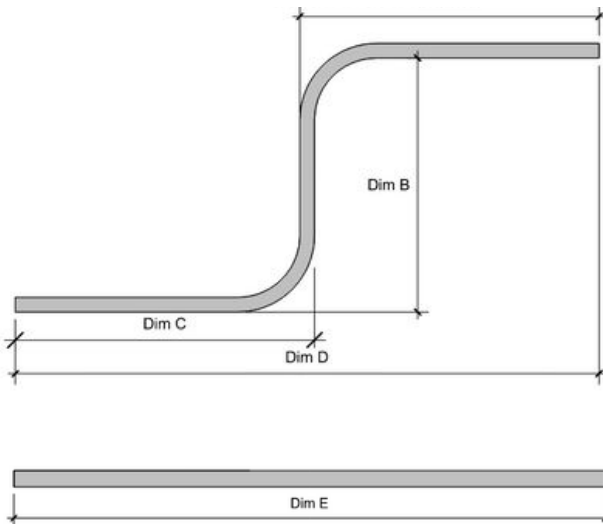
Applications

- Congested pathways
- Directional routing
- Equipment offsets

FSG-CN04

Back-to-Back 90s

Back-to-Back 90s are paired conduit bends designed to create tight directional changes with minimal footprint.



Features

- Compact bend configuration
- Consistent geometry
- Reduces field bending
- Improves layout control
- Clean routing solution

Applications

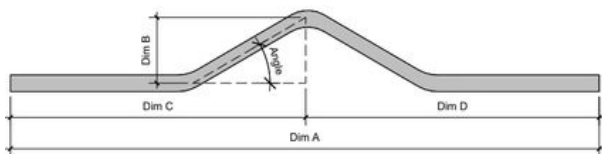
- Tight mechanical rooms
- Equipment transitions
- Raceway alignment

CONDUIT

FSG-CN05

Saddles (3 or 4-Bend)

Saddle Bends are prefabricated conduit solutions for crossing over obstructions while maintaining elevation continuity.



Features

- Precise saddle geometry
- Maintains conduit elevation
- Reduces layout errors
- Factory fabricated
- Consistent field results

Applications

- Crossing utilities
- Obstruction clearance
- Raceway coordination

FSG-CN06

Threaded Nipples

Threaded Nipples are precision-cut conduit sections fabricated to specified lengths for clean, reliable connections.



Features

- Precision-cut lengths
- Clean threading
- Consistent fit
- Reduces field cutting
- Built to specification

Applications

- Panel connections
- J-box transitions
- Equipment tie-ins



IN-WALL ROUGH-IN

1. RECEPTACLE ASSEMBLIES
2. DATA & COMMUNICATION ASSEMBLIES
3. COMBINATION POWER & DATA ASSEMBLIES
4. SPECIALTY & DEDICATED DEVICE ASSEMBLIES
5. MULTI-GANG DEVICE ASSEMBLIES
6. SWITCH & CONTROL ASSEMBLIES
7. FIRE ALARM & LIFE SAFETY ASSEMBLIES

IN-WALL ROUGH-IN

FSG-IW01

Receptacle Assemblies

Receptacle Assemblies are prefabricated in-wall box and conduit assemblies designed to support standard power receptacles. Assemblies are built to maintain consistent height, depth, and alignment while reducing layout time during wall rough-in.



Features

- Prefabricated wall assemblies
- Consistent box height and depth
- Reduces layout and install time
- Supports standard wall systems
- Job-ready for installation

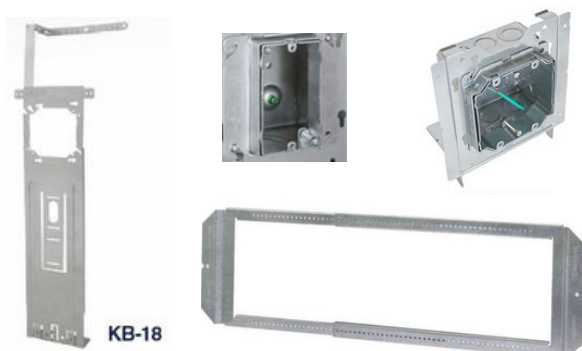
Available Options

- Single-gang receptacle
- Double-gang receptacle
- Duplex receptacle
- GFCI receptacle
- USB receptacle
- Dedicated circuit receptacle

FSG-IW02

Data & Communication Assemblies

Data & Communication Assemblies provide prefabricated in-wall solutions for low-voltage devices. Assemblies support clean routing and accurate device placement while reducing coordination between trades.



Features

- Prefabricated low-voltage assemblies
- Consistent device placement
- Reduces coordination effort
- Supports structured cabling
- Built to project layouts

Available Options

- Single data device (D1)
- Dual data device (D2)
- Voice/data combinations
- Blank low-voltage boxes

IN-WALL ROUGH-IN

FSG-IW03

Combination Power & Data Assemblies

Combination Power & Data Assemblies integrate power and low-voltage devices into a single coordinated in-wall prefab solution. These assemblies improve efficiency while maintaining proper spacing and alignment.



Features

- Integrated power and data layouts
- Consistent spacing and alignment
- Reduces onsite coordination
- Prefabricated for efficiency
- Job-ready assemblies

Available Options

- Power + single data
- Power + dual data
- Power + communication combinations
- Custom device pairings

FSG-IW04

Specialty & Dedicated Device Assemblies

Specialty and Dedicated Device Assemblies support non-standard electrical devices that require dedicated placement or circuitry. Assemblies are prefabricated to maintain accuracy and reduce field adjustments.



Features

- Supports specialty devices
- Accurate box placement
- Reduces field modifications
- Built to device requirements
- Prefabricated for consistency

Available Options

- Dedicated receptacles
- Isolated ground devices
- Specialty voltage devices
- Project-specific configurations

IN-WALL ROUGH-IN

FSG-IW05

Multi-Gang Device Assemblies

Multi-Gang Device Assemblies are prefabricated in-wall solutions designed for multiple devices requiring grouped placement. Assemblies improve alignment and reduce rough-in coordination for complex device layouts.



Features

- Multi-gang wall assemblies
- Maintains device alignment
- Reduces layout errors
- Supports mixed device types
- Job-ready installation

Available Options

- Two-gang assemblies
- Three-gang assemblies
- Four-gang assemblies
- Mixed device configurations

FSG-IW06

Switch & Control Assemblies

Specialty and Dedicated Device Assemblies support non-standard electrical devices that require dedicated placement or circuitry. Assemblies are prefabricated to maintain accuracy and reduce field adjustments.



Features

- Prefabricated switch assemblies
- Consistent mounting height
- Supports control devices
- Reduces field adjustments
- Built to layout drawings

Available Options

- Single-pole switches
- Multi-location switches
- Dimming controls
- Specialty control devices

IN-WALL ROUGH-IN

FSG-IW07

Fire Alarm & Life Safety Assemblies

Fire Alarm & Life Safety Assemblies are prefabricated in-wall solutions designed to support fire alarm and signaling devices. Assemblies are built to maintain consistent placement and simplify rough-in coordination.



SSB-MB3 shown

Features

- Prefabricated life-safety assemblies
- Consistent device placement
- Reduces coordination effort
- Supports code-required devices
- Job-ready configurations

Available Options

- Fire alarm devices
- Notification appliances
- Pull station assemblies
- Specialty signaling devices

CENTRAL PLANT AREA
SUBSTATION "CP"
3000KVA DOUBLE-ENDED
85kAIC

ATO SCHEME PER SPEC.



ELECTRICAL ROOM ASSEMBLIES

1. TRANSFORMER ASSEMBLIES WITH WHIPS
2. TRANSFORMER STANDS
3. PANEL ASSEMBLIES & KO LAYOUTS

ELECTRICAL ROOM ASSEMBLIES

FSG-ER01

Transformer Assemblies with Whips

Transformer Assemblies include prefabricated conduit, wire, and terminations to streamline transformer installation.



Features

- Prefabricated transformer whips
- Organized conduit routing
- Reduces onsite wiring labor
- Built to coordinated drawings
- Job-ready installation

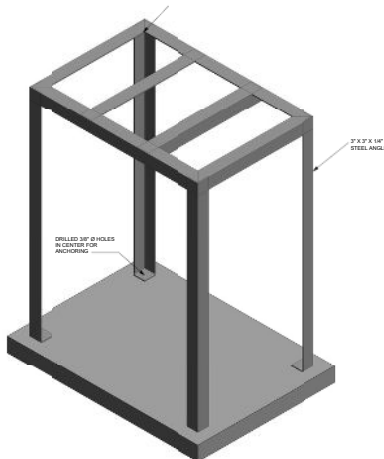
Applications

- Electrical rooms
- Equipment areas
- Power distribution

FSG-ER02

Transformer Stands

Transformer Stands are welded steel supports fabricated to elevate and stabilize transformers in electrical rooms.



Features

- Welded steel construction
- Consistent equipment elevation
- Improves equipment access
- Built to project requirements
- Job-ready fabrication

Applications

- Electrical rooms
- Equipment pads
- Power rooms

3d Ortho

ELECTRICAL ROOM ASSEMBLIES

FSG-ER03

Panel Assemblies & KO Layouts

Panel Assemblies include prefabricated knockouts, conduit stubs, and J-box coordination to reduce onsite modifications.



Features

- Preplanned knockout layouts
- Reduces field drilling
- Improves panel organization
- Built to panel schedules
- Supports coordinated installs

Applications

- Electrical rooms
- Distribution panels
- Service areas



FIXTURE ASSEMBLIES

1. PENDANT FIXTURE ASSEMBLIES
2. DROP-IN FIXTURES (2X2, 2X4)
3. CAN & LINEAR FIXTURES

FIXTURES

FSG-FX01

Pendant Fixture Assemblies

Pendant Fixture Assemblies include prefabricated mounting and connection components for consistent fixture installation.



Features

- Prefabricated rack assemblies
- Organized conduit support
- Reduces field fabrication
- Built to coordinated layouts
- Job-ready installation

Applications

- Commercial lighting
- Retail spaces
- Open ceilings

FSG-FX02

Drop-In Fixtures (2x2 / 2x4)

Drop-In Fixture Assemblies support efficient installation of grid-mounted lighting systems.



Features

- Project-specific fabrication
- Built to provided drawings
- Supports non-standard layouts
- Reduces onsite assembly
- Prefab for accuracy

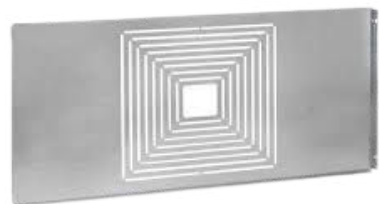
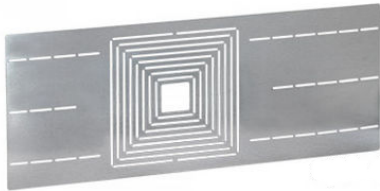
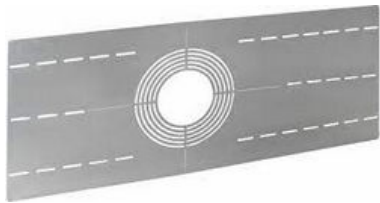
Applications

- Offices
- Commercial interiors
- Educational facilities

FSG-FX03

Can & Linear Fixtures

Can and Linear Fixture Assemblies provide prefabricated support and connection components for architectural lighting.



Features

- Clean, repeatable installs
- Reduced field wiring
- Supports multiple fixture styles
- Prefabricated for efficiency

Applications

- Architectural lighting
- Commercial spaces
- Feature lighting





Duplex Ground Fault Interrupter



Special-purpose Outlet



Lamp Holder



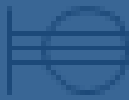
Split-Wired Duplex Outlet



Duplex Special-purpose Outlet



Lamp holder pull switch



240v

240v Outlet



Special-purpose connection or provision for connection



Pull Switch



Floor Mounted Outlet



Multi-outlet Assembly



Vapor shield lamp outlet



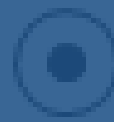
Floor Special-purpose Outlet



Data/Voice, Power Floor Mounted Outlet



Exit Light Outlet



Floor Receptacle



Heavy Duty Outlet



Clock Hanger Outlet, Mounted



Telephone Outlet



Heavy Duty Outlet with Convenience Outlet



Blanked Outlet



Floor Phone Outlet



Triplex Outlet



Drop Outlet



Wall Phone Outlet

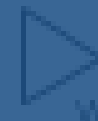
1. PIGTAIL DEVICE ASSEMBLIES
2. INDUSTRIAL RAISED COVERS



Split-Wired Triplex Outlet



Electrical IO Outlet



Weatherproof Outlet



Quadplex Outlet



Fan Outlet



Phone Receptacle



Emergency Circuit Quadplex Outlet



Junction Box



Computer Outlet

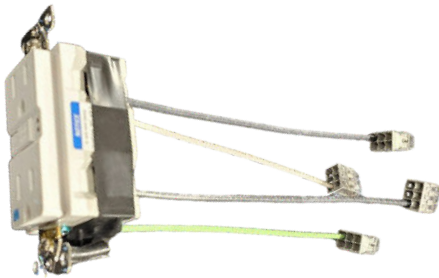


DEVICES & TRIM

FSG-DT01

Pigtail Device Assemblies

Pigtail Device Assemblies include prewired devices to simplify final trim-out and reduce onsite wiring time.



Features

- Prewired devices
- Consistent connections
- Reduces trim labor
- Improves quality

Applications

- Final trim-out
- Office interiors
- Tenant improvements

FSG-DT02

Industrial Raised Covers

Industrial Raised Covers are prefabricated assemblies designed for surface-mounted and industrial device applications.



Features

- Durable cover options
- Accurate fit
- Supports industrial devices
- Job-ready assemblies

Available Options

- Industrial raised switch cover
- Industrial raised receptacle cover
- Industrial raised decora cover
- Custom cover or trim

Applications

- Industrial spaces
- Utility rooms
- Exposed installations



ROOFTOP ASSEMBLIES

1. ROOFTOP EQUIPMENT RACKS
2. ROOFTOP EQUIPMENT STANDS
3. ROOFTOP CONDUIT RACKS

ROOFTOP ASSEMBLIES

FSG-RT01

Rooftop Equipment Racks

Rooftop Equipment Racks are prefabricated strut assemblies designed to support rooftop mechanical and electrical equipment.



Features

- Prefabricated strut systems
- Reduces rooftop labor
- Organized equipment support
- Built for exterior exposure

Applications

- Rooftop equipment
- Mechanical units
- Electrical distribution

FSG-RT02

Rooftop Equipment Stands

Rooftop Equipment Stands provide elevated support for rooftop systems requiring stable, level mounting.



Features

- Welded steel construction
- Consistent elevation
- Exterior-rated fabrication
- Job-ready

Applications

- HVAC equipment
- Rooftop units
- Equipment platforms

ROOFTOP ASSEMBLIES

FSG-RT03

Rooftop Conduit Racks

Rooftop Conduit Racks organize and support raceways across rooftop environments.



Features

- Organized conduit routing
- Prefabricated supports
- Reduces rooftop congestion
- Exterior-ready

Applications

- Rooftop raceways
- Equipment interconnections
- Commercial rooftops



DATA & LOW VOLTAGE

- 1. DATA & LOW VOLTAGE ASSEMBLIES
- 2. COMBINATION POWER & LOW VOLTAGE ASSEMBLIES
- 3. SPECIALTY LOW VOLTAGE ASSEMBLIES

FSG-DL01

Data Rack Assemblies

Data Rack Assemblies are prefabricated support systems designed to organize and support data, communication, and low-voltage cabling. Assemblies are built to project layouts to ensure proper spacing, accessibility, and consistent installation.



Features

- Prefabricated data rack assemblies
- Organized cable routing support
- Reduces onsite fabrication
- Built to coordinated layouts
- Job-ready for installation

Applications

- Data and communication rooms
- Technology spaces
- Commercial facilities

FSG-DL02

J-Hook Assemblies

J-Hook Assemblies provide prefabricated overhead cable support solutions for data and low-voltage systems. Assemblies maintain proper cable pathways while reducing repetitive installation tasks.



Features

- Prefabricated J-hook assemblies
- Supports structured cabling systems
- Maintains proper cable routing
- Reduces field labor
- Job-ready components

Applications

- Overhead data cabling
- Open ceiling spaces
- Commercial interiors



LEAN & 5S

- 1: FOREMAN CART
- 2: 5S GANGBOX
- 3: KAIZEN FOAM
- 4: BENDER CART
- 5: CUSTOM

FSG-LN01

Foreman Cart

Foreman Carts are mobile, jobsite-ready workstations designed to keep foremen and supervisors on the floor with their crews. These carts support live access to drawings, schedules, and digital coordination tools, reducing unnecessary trips to job trailers.



Features

- Mobile foreman workstation
- Supports live drawing access
- Reduces trips to job trailer
- Improves field communication
- Built for daily job site use

Applications

- Active job site supervision
- Field coordination meetings
- Large commercial projects

FSG-LN02

5S Gangbox

5S Gangboxes provide organized, standardized storage solutions that support lean jobsite practices. Designed to improve material control and visibility, these gangboxes help reduce wasted time and misplaced tools.



Features

- Organized tool and material storage
- Supports 5S jobsite practices
- Improves material visibility
- Reduces lost or misplaced items
- Jobsite-ready construction

Applications

- Tool storage areas
- Lean jobsite setups
- Material staging zones

FSG-LN03

Kaizen Foam

FSG Kaizen Foam is a customizable organization solution used to create dedicated storage layouts for tools and equipment. Foam inserts improve accountability, reduce search time, and support consistent work practices.



Features

- Custom-cut foam layouts
- Improves tool organization
- Reduces search time
- Supports visual management
- Available in multiple sizes

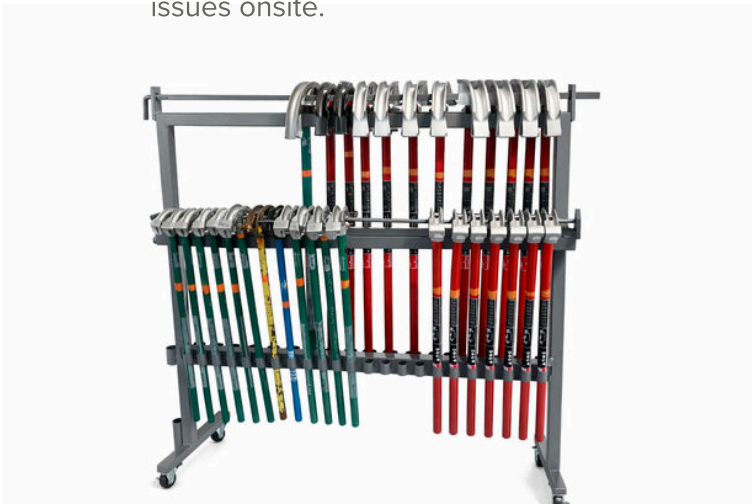
Applications

- Tool carts and drawers
- Gangboxes and storage carts
- Lean workstations

FSG-LN04

Bender Storage Cart

FSG Bender Storage Carts are designed to store and transport conduit benders in an organized, accessible format. These carts improve tool availability while reducing handling and storage issues onsite.



Features

- Dedicated bender storage
- Mobile cart design
- Improves tool accessibility
- Reduces handling damage
- Jobsite-ready construction

Applications

- Conduit bending areas
- Tool storage zones
- Large project sites